

This Page Is Inserted by IFW Operations  
and is not a part of the Official Record

## **BEST AVAILABLE IMAGES**

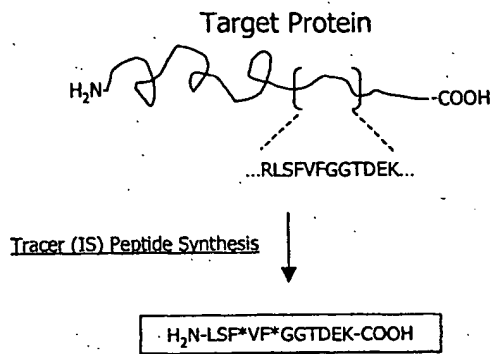
Defective images within this document are accurate representations of the original documents submitted by the applicant.

Defects in the images may include (but are not limited to):

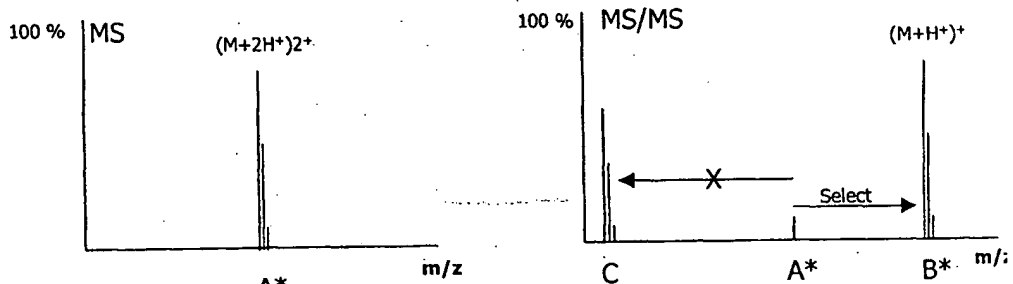
- BLACK BORDERS
- TEXT CUT OFF AT TOP, BOTTOM OR SIDES
- FADED TEXT
- ILLEGIBLE TEXT
- SKEWED/SLANTED IMAGES
- COLORED PHOTOS
- BLACK OR VERY BLACK AND WHITE DARK PHOTOS
- GRAY SCALE DOCUMENTS

**IMAGES ARE BEST AVAILABLE COPY.**

**As rescanning documents *will not* correct images,  
please do not report the images to the  
Image Problem Mailbox.**

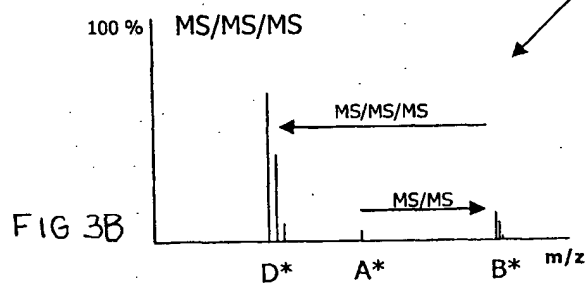


**Fig. 1**



**Fig. 2**

**FIG 3A**



**FIG 3B**

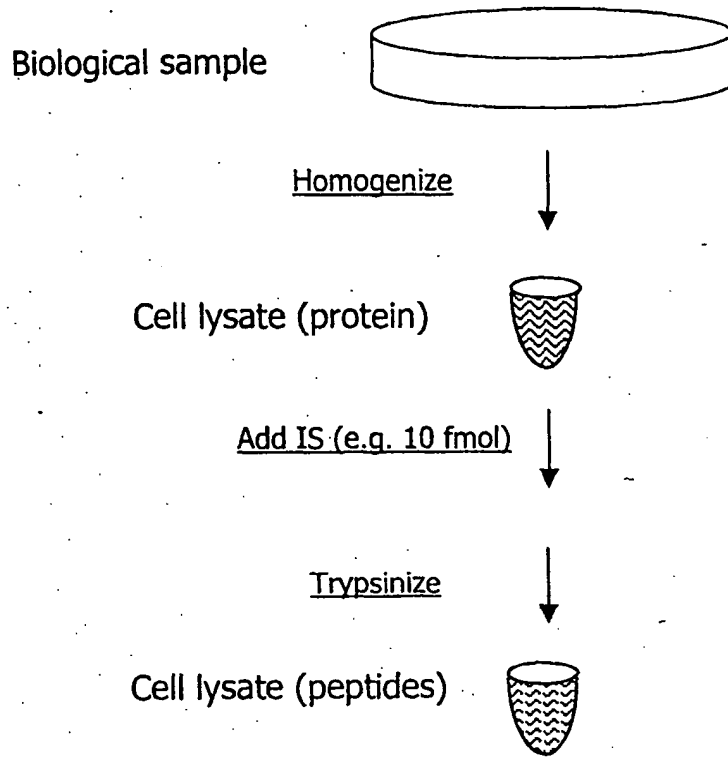


FIG. 4A

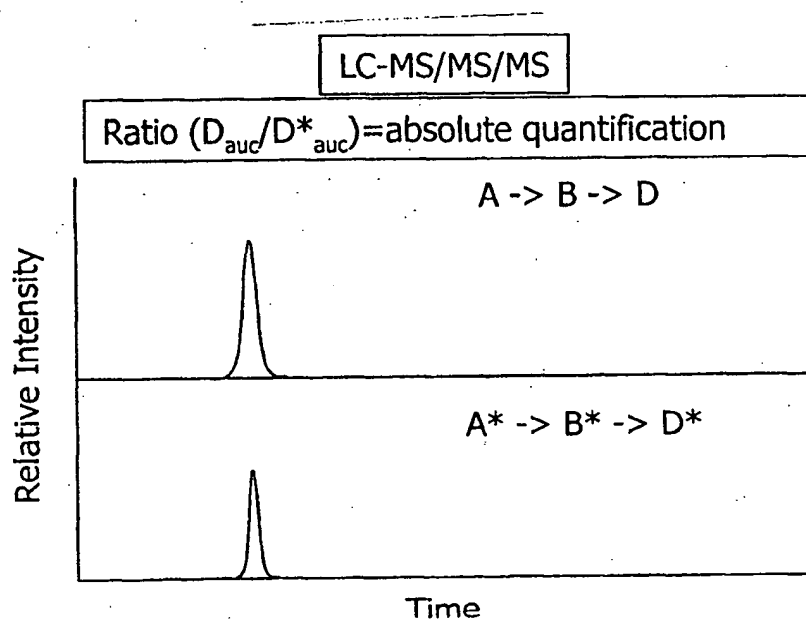
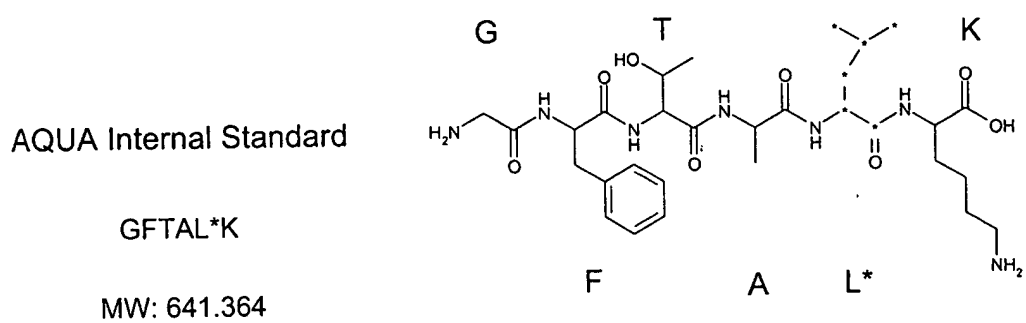
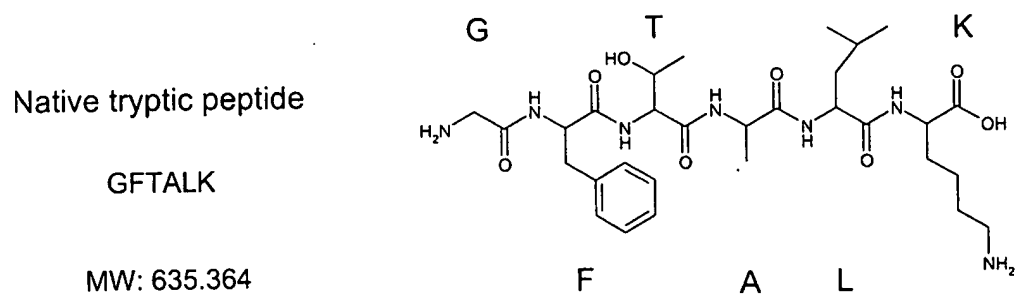


FIG. 4B

FIG. 5A



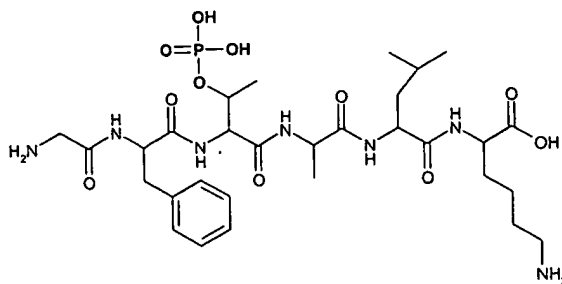
\* = stable isotope (e.g.  $^{13}\text{C}$ )

FIG. 5B

Native phosphopeptide

GF(pT)ALK

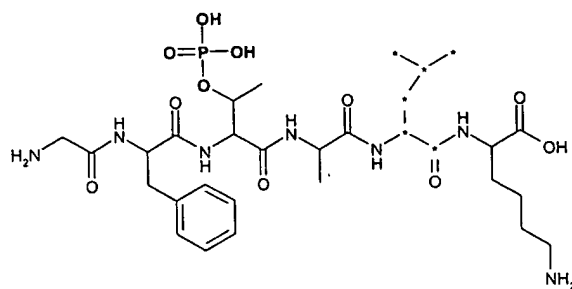
MW: 715.75



AQUA phosphopeptide  
Internal Standard

GF(pT)AL\*K

MW: 721.75



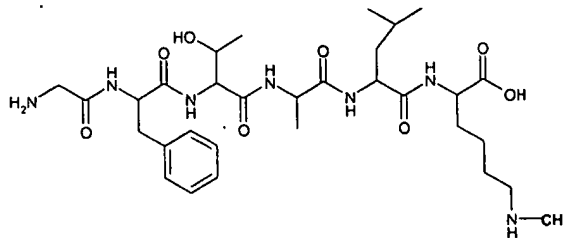
\* = stable isotope (e.g.  $^{13}\text{C}$ )

FIG. 5C

Native methylated peptide

GFTAL(mK)

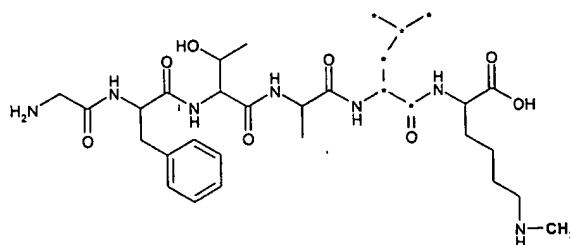
MW: 649.79



AQUA methylated peptide  
Internal Standard

GFTAL\*(mK)

MW: 655.79



\* = stable isotope (e.g.  $^{13}\text{C}$ )

FIG. 6

